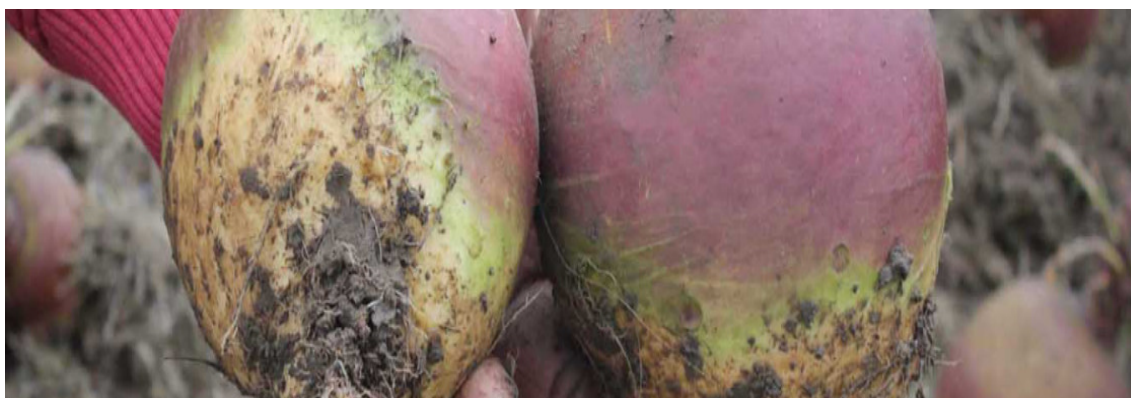


# Gowrie

## Uniform roots for pre or post utilisation



**End Use:** Dairy, Beef, Sheep & Culinary

**Utilisation:** Lift and Store & Graze in situ

**Sowing period:** Spring

**Utilisation Period:** Winter

**Gowrie is a variety bred in Scotland and can be utilised pre or post Christmas.**

It can produce high dry matter yields and exhibits good resistance to both clubroot and powdery mildew.

Bred by [James Hutton Institute](#).

### Strengths

- High dry matter yields
- Club root resistant
- Powdery mildew resistant
- Dual purpose
- Frost tolerant

